



CATERING MENU

ELEVATE YOUR EVENT WITH ZADNA GRILL CATERING SERVICES

Appetizer Trays



HUMMUS

Does not include pita

HALF TRAY (15PPL)
\$65.00

FULL TRAY (30PPL)
\$120.00



BABA GHANOUJ

Soaked Eggplant.
Does not include pita

HALF TRAY (15PPL)
\$50.00

FULL TRAY (30PPL)
\$95.00



LABNI B KHIAR

Cucumber, yoghurt, garlic,
dried mint.
Does not include Pita.

HALF TRAY (20PPL)
\$95.00

FULL TRAY (30PPL)
\$120.00



DOLMA GRAPE LEAVES

Does not include Pita.

(30PC) \$75.00

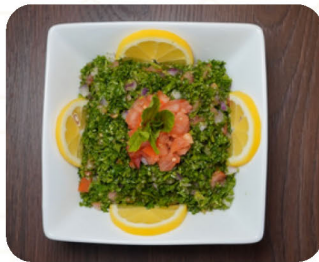


FATTOUSH SALAD

Lettuce, cucumber,
tomatoes, mint, onions,
radishes, parsley, bell
peppers, oregano, croutons,
lemon juice & pomegranate

HALF TRAY (15PPL)
\$60.00

FULL TRAY (30PPL)
\$120.00



TABOULI

Parsley, onion, tomatoes,
bulgur (crunch wheat),
olive oil & lemon juice

FULL TRAY (30PPL)
\$60.00

HALF TRAY (15PPL)
\$120.00

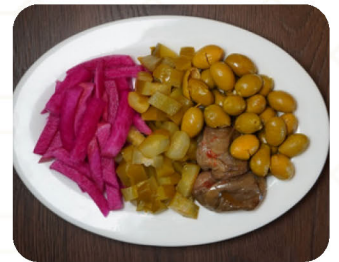


FALAFEL

A mixture of garbanzo and
fava beans, onions, garlic,
parsley. Does not include
Pita.

HALF TRAY (30PC)
\$50.00

FULL TRAY (75PC)
\$125.00



KABIS MIX

Mixed pickles, turnip,
cucumber, olive.

Full Tray (18-20 people)
\$95



Vegetarian Trays



MOONAZALE STEW

Eggplant, stew onions, tomatoes, garlic, green/red peppers, garbanzo

TRAY (8-12PPL)
\$275



MOO-JADARRA

Rice & lentils cooked on slow heat, garnished with caramelized onion & cumin

TRAY (8-12PPL)
\$275



BASBOUSA

\$7.00 a Piece
(Minimum 20 pieces)



BAKLAVA

\$5.00 a Piece
(Minimum 20 pieces)

Wrap Trays



VEGGIE OKRA STEW

Sauteéd okra, tomatoes, cilantro, garlic

TRAY (8-12PPL)
\$275



GRILLED VEGGIE TRAY

Eggplant, zucchini, cauliflower, tomato, carrot and onion, jalapeño
Served with our signature lemon tahini hot sauce

Serves 15-18
\$95.00

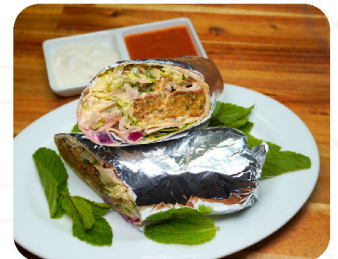


CHICKEN SHAWARMA WRAP BITES

Served with hot sauce, garlic and pickles

HALF TRAY (28PC)
\$100.00

FULL TRAY (56PC)
\$190.00



FALAFEL WRAP BITES

Served with hot sauce, tahini, pickles and garlic

HALF TRAY (28PC)
\$100.00

FULL TRAY (56PC)
\$190.00



BASTAMI RICE

Serves 18 - 20
\$95.00



PITA TRAY

Serves 20
\$45.00



BEEF & LAMB SHAWARMA WRAP BITES

Served with parsley and onion sumak, hot sauce, tahini, and garlic

HALF TRAY (28PC) \$100.00

FULL TRAY (56PC) \$190.00



Main Courses



KEBAB MIX TRAY

Serves 18 -20 people

Includes rice or salad, pita, pickles, garlic, & hot sauce

9 skewers chicken (36 pc)

9 skewers kafta (36 pc)

9 skewers beef (36 pc)

\$320.00



CHICKEN SHAWERMA TRAY

Serves 18 -20 people

Includes rice or salad, pita, pickles, garlic, & hot sauce

\$300.00



BEEF & LAMB SHAWERMA TRAY

Serves 18 -20 people

Includes rice or salad, pita, pickles, garlic, & hot sauce

\$300.00



KEBAB MIX UP PACKAGE

Minimum 30 people

Includes rice, house salad, pita, pickles, garlic, & hot sauce

Chicken Shish Tawook

Kafta Kebab

Falafel

Humus

\$35.00 per person



SHAWERMA MIX UP PACKAGE

Minimum 30 people

Includes rice, house salad, pita, pickles, garlic, & hot sauce

Spit-Roasted Chicken

Beef & Lamb

Falafel

Humus

\$35.00 per person



FAROOJ MESHWE PACKAGE

Serves 18 -20 people

Grilled Chicken cut into 1/4 marinade with French fries, garlic, hot sauce and lemon juice

\$195.00



Main Courses



LAMB SHISH KABAB

Serves 12 -15 people

Grilled lamb served with choice of side of Basmati rice or house salad, include garlic and hot sauce

\$210.00



BEEF SHISH KABAB

Serves 12 -15 people

Grilled beef served with your choice of side of Basmati rice or house salad, include garlic and hot sauce

\$210.00



KAFTA KABAB

Serves 12 -15 people

Minced ground beef and lamb with blended herbs served with your choice of side of Basmati rice or house salad, include garlic and hot sauce

\$210.00



CHICKEN SHISH TAOUK KEBAB

Serves 12 -15 people

cubes of grilled chicken breast served with your choice of side of Basmati rice or house salad, include garlic and hot sauce

\$210.00

WE'LL DO OUR BEST TO ACCOMMODATE SPECIAL REQUESTS BUT MAY NOT BE ABLE TO HONOR ALL SUBSTITUTES. EXTRA CHARGE MAY APPLY.

@zadnagrillrwc

Zadna Grill

cateringzadna@yahoo.com

650-366-9600

2653 Broadway St Redwood City Ca, 94536

zadnagrill.com

